



# OLD TOWN BRICKS SCARF

by Olga Buraya-Kefelian

Weaving throughout the length of the scarf, these cables were inspired by the geometric brick sidewalks and buildings of Old Town, ALX! It's perfect for advanced beginners ready to tackle their first cabling project.





## Sizes

1 (2)

## Finished Measurements

(blocked)

Length approx. 73" / 185.5 cm

Width (at the widest point) approx. 7 (10)" / 17.5 (25) cm

## Materials

- De Rerum Natura "Cyrano" (100% wool); approx. 164 yds (150 m) per 3.5 oz (100 g); 3 (4) balls;

*Pink scarf shown in size 1 in color "Argile".*

OR approx. 464 (649) yds / 424 (593) m in any other Bulky / Chunky weight yarn with similar properties

*Yardage listed includes 10% padding for swatching.*

- US#11 (8 mm) straight or circular (24" / 61 cm or longer)  
OR use size to obtain gauge
- 1 stitch marker
- 1 removable stitch marker or pin
- Cable needle (CN)
- Tapestry needle

## Notes

This scarf is easily adaptable to make it shorter or longer. Please account for extra yardage that might be required.

## Gauge

1 [16 sts and 12 rows] cable pattern repeat = approx. 2¾" / 7 cm wide and 2¼" / 5.5 cm long, worked flat, measured once dry after washing and blocking.

## Techniques

### 4/4 RCKP - 8 stitch RIGHT CABLE

Slip next 4 sts onto CN and hold in back, k2, p2, then k2, p2 from CN

### 4/4 LCKP - 8 stitch LEFT CABLE

Slip next 4 sts onto CN and hold in front, k2, p2, then k2, p2 from CN

## Abbreviations

- BO - bind off
- CO - cast on
- k - knit
- p - purl
- rem - rem(ain/ing)
- rep - repeat
- sts - stitches

## Directions

Using your preferred method, CO 40 (56) sts onto needle.

### MAIN SCARF PATTERN

**Row 1 (WS):** \*K2, p2; rep from \* to end.

**Row 2 (RS):** \*K2, p2; rep from \* to end.

**Row 3:** Work as Row 1.

**Row 4:** Work as Row 2.

**Row 5:** Work as Row 1.

**Row 6:** K2, p2, \*4/4 LCKP, (k2, p2) 2 times; rep from \* to last 4 sts, k2, p2.

**Row 7:** Work as Row 1.

**Row 8:** Work as Row 2.

**Row 9:** Work as Row 1.

**Row 10:** Work as Row 2.

**Row 11:** Work as Row 1.

**Row 12:** K2, p2, \*(k2, p2) 2 times, 4/4 RCKP; rep from \* to last 4 sts, k2, p2.

Work Rows 1-12 of Main Cable pattern for a total of 32 times.

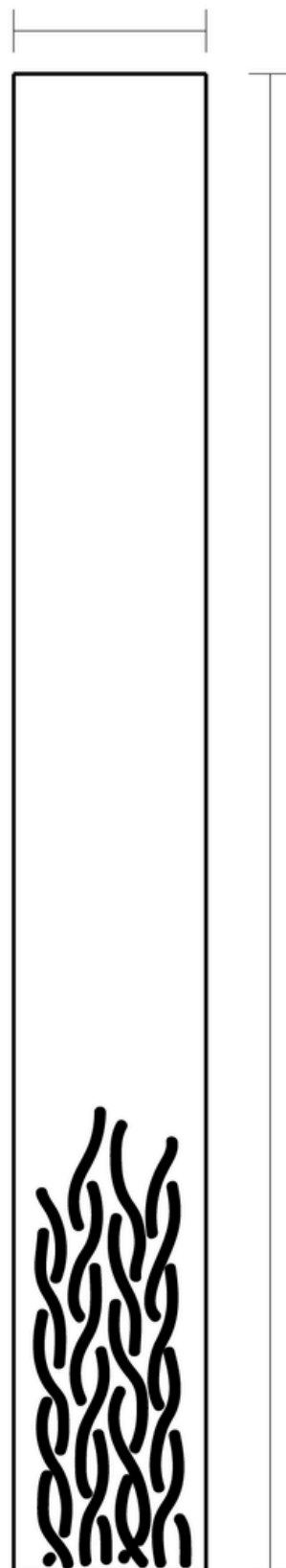
Then work Rows 1-5 one time only. On the next row, BO all sts in pattern.

## Finishing

Weave in ends but do not trim them.

Soak scarf in warm water with wool wash. Do not wring. Block to measurements. Trim ends.

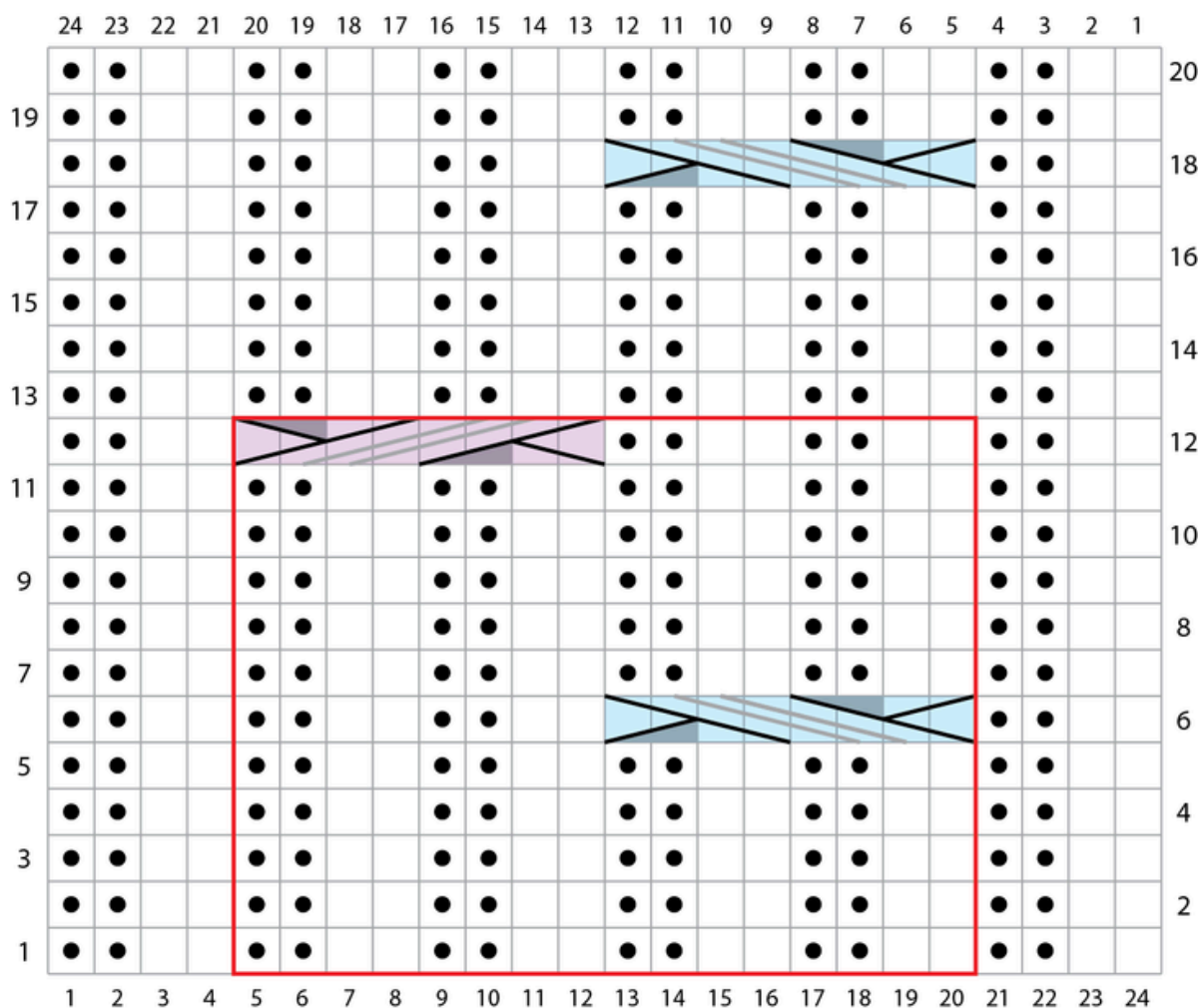
7 (10)" /  
17.5 (25) cm








73" /  
185.5 cm



# Cable Chart



## Chart Key

-  RS: knit  
WS: purl
-  RS: purl  
WS: knit
-  4/4 LCKP
-  4/4 RCKP
-  pattern repeat

All images, text, charts and illustrations © Olga Buraya-Kefelian and Fibre Space 2026.

This pattern is for personal use only. Class use and/or translations are allowed only with the written permission of Olga Buraya-Kefelian and Fibre Space.