



OLD TOWN BRICKS COWL

by Olga Buraya-Kefelian

This cozy cowl was inspired by the designs found in brick sidewalks and buildings of Old Town, ALX! It's perfect for advanced beginners ready to tackle their first cabling project.





Sizes

1 (2, 3)

Finished Measurements

(blocked)

Circumference approx. 27½ (30¼, 33)" / 70 (77, 84) cm

Height approx. 9¼" / 23.5 cm

Materials

- De Rerum Natura "Cyrano" (100% wool); approx. 164 yds (150 m) per 3.5 oz (100 g);
2 (2, 3) balls;

Mint cowl shown in size 1 in color "Sauge".

OR approx. 293 (323, 352) yds / 268 (295, 322) m in any other Bulky / Chunky weight yarn with similar properties

Yardage listed includes 10% padding for swatching.

- US#11 (8 mm) circular, 24" / 61 cm
OR use size to obtain gauge
- 1 stitch marker
- 1 removable stitch marker or pin
- Cable needle (CN)
- Tapestry needle

Notes

This cowl is easily adaptable to make it narrower or wider by working additional full pattern repeats. Please account for extra yardage that might be required.

Gauge

1 [16 sts and 12 rnds] cable pattern repeat = approx. 2¾" / 7 cm wide and 2" / 5 cm long, worked in the rnd, measured once dry after washing and blocking.

Techniques

4/4 RCKP - 8 stitch RIGHT CABLE

Slip next 4 sts onto CN and hold in back, k2, p2, then k2, p2 from CN

4/4 LCKP - 8 stitch LEFT CABLE

Slip next 4 sts onto CN and hold in front, k2, p2, then k2, p2 from CN

Abbreviations

- BO - bind off
- CO - cast on
- k - knit
- m - marker
- p - purl
- rem - rem(ain/ing)
- rep - repeat
- rnd(s) - round(s)
- sts - stitches

Directions

Using your preferred method, CO 161 (177, 193) sts onto needle.

Join to work into rnd by placing first CO st onto right needle right next to last CO st, with the tip of left needle pass the last CO st over the first CO st, then slip that st back onto right needle.

160 (176, 192) sts. Place beginning of the rnd m.

MAIN CABLE COWL PATTERN

Rnds 1-4: *K2, p2; rep from * to end.

Rnd 5: *4/4 LCKP, (k2, p2) 2 times; rep from * to end.

Rnds 6-10: *K2, p2; rep from * to end.

Rnd 11: *(K2, p2) 2 times, 4/4 RCKP; rep from * to end.

Rnds 12-16: *K2, p2; rep from * to end.

Place a removable m or pin to indicate public (RS) of the cowl.

Work Rnds 5-16 for a total of 4 times.

Then work Rnds 5-9 one time only.

On the next rnd, BO all sts in pattern.

Cable Chart

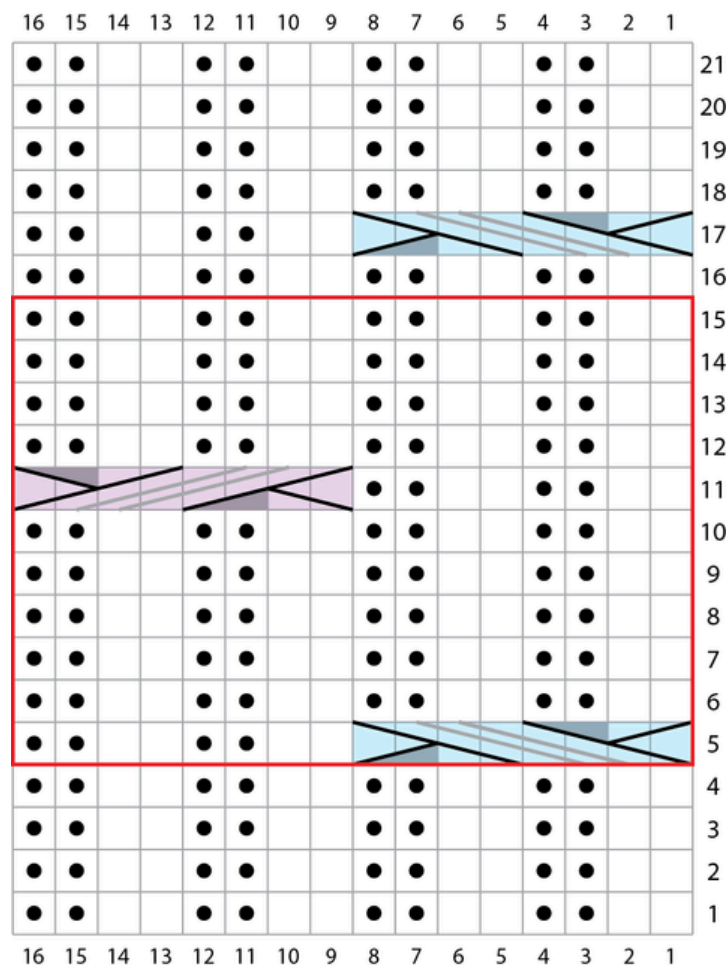


Chart Key

□ knit

● purl

 4/4 LCKP

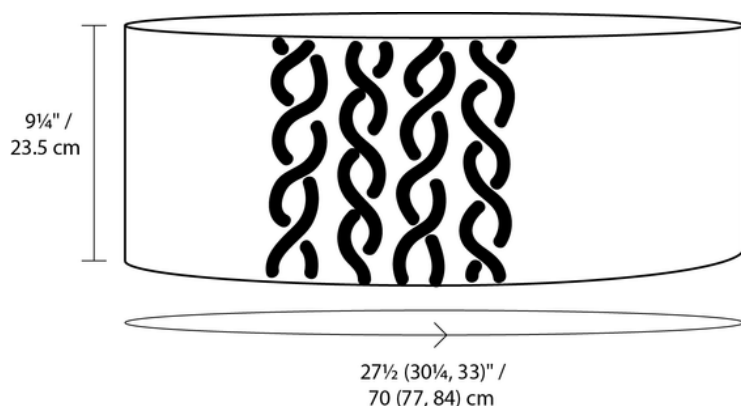
 4/4 RCKP

□ pattern repeat

Finishing

Weave in ends but do not trim them.

Soak cowl in warm water with wool wash. Do not wring. Block to measurements. Trim ends.



All images, text, charts and illustrations © Olga Buraya-Kefelian and Fibre Space 2025.

This pattern is for personal use only. Class use and/or translations are allowed only with the written permission of Olga Buraya-Kefelian and Fibre Space.